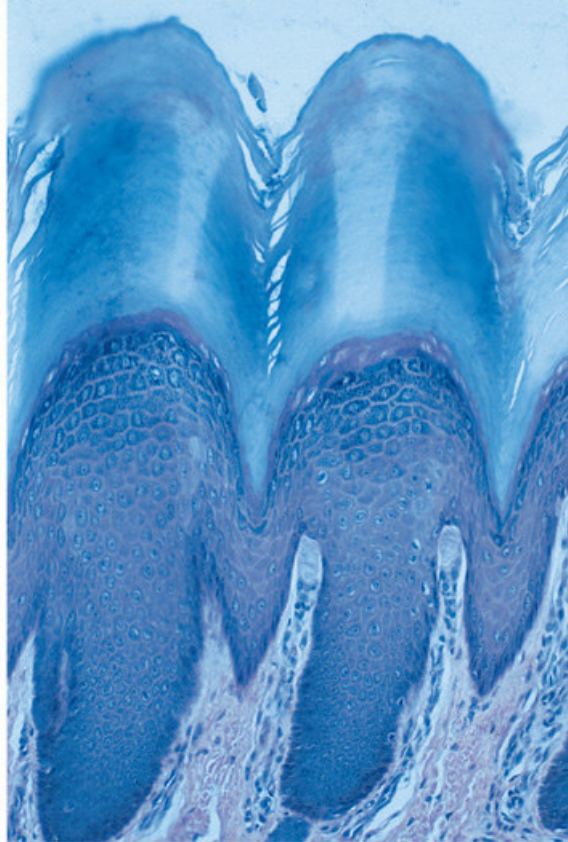


INTEGUMENTARY HISTOLOGY REVIEW (Lab 2)

Label all 5 layers of the epidermis and a dermal papilla.

Copyright © The McGraw-Hill Companies, Inc. Permission required for reproduction or display.

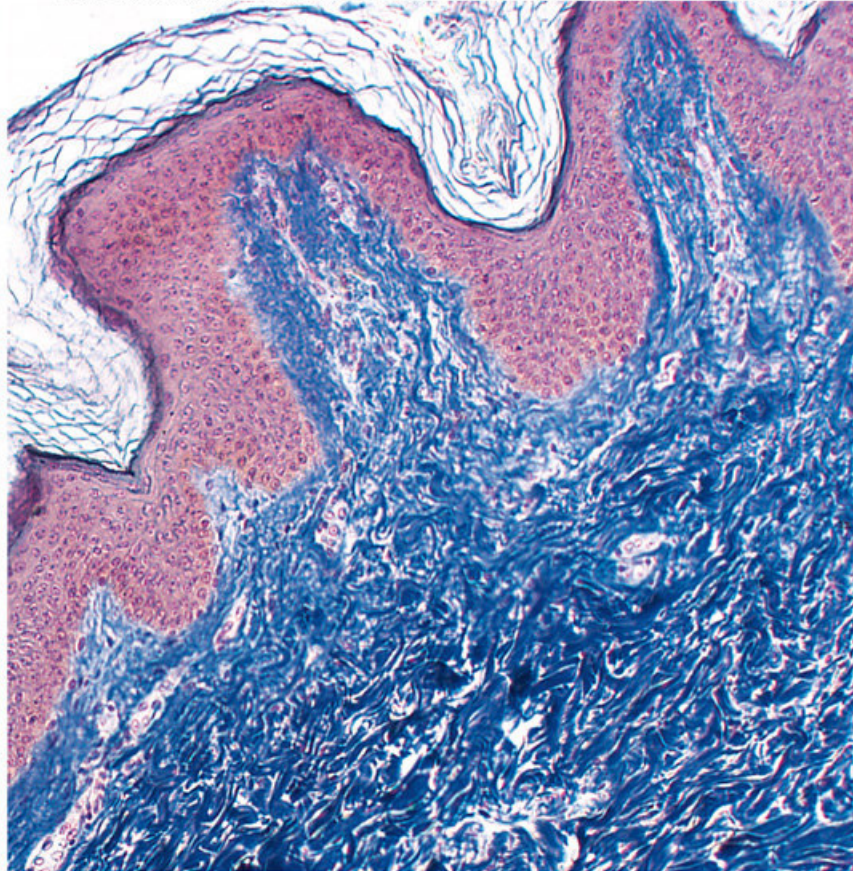


(b)

© The McGraw-Hill Companies, Inc. / Dennis Strete, photographer

Label 4 layers of the epidermis and 2 layers of the dermis.

Copyright © The McGraw-Hill Companies, Inc. Permission required for reproduction or display.



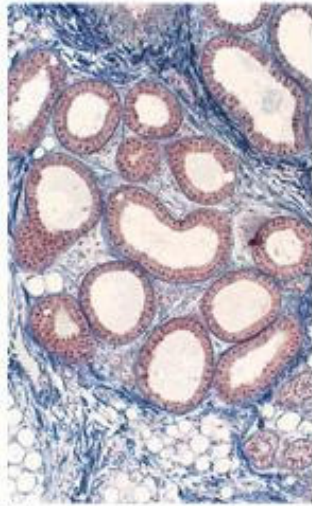
(a)

© The McGraw-Hill Companies, Inc. / Dennis Strete, photographer

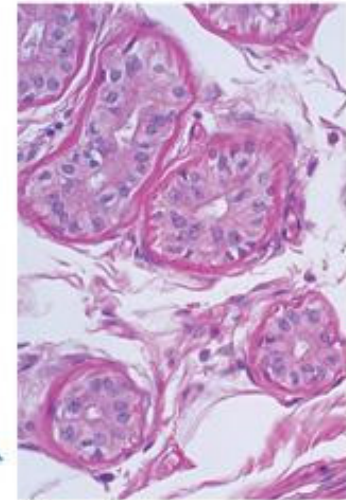
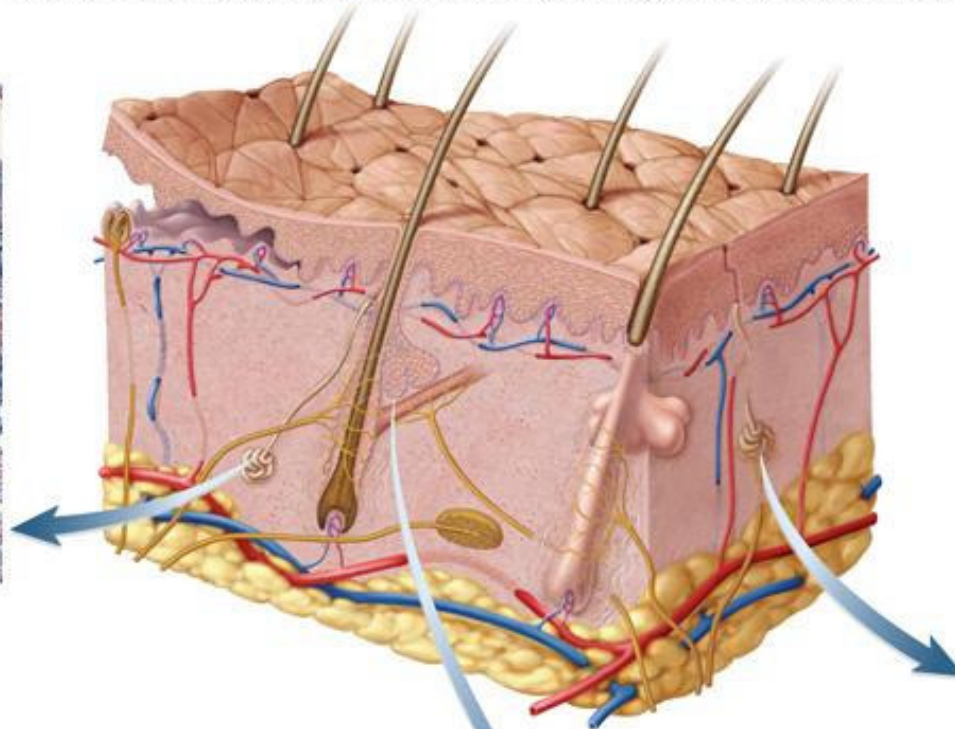
Label glands a, b & c, a hair follicle, and a hair root.

Which of these glands are sudoriferous glands? _____

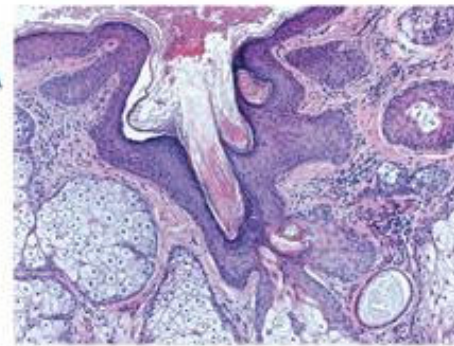
Copyright © The McGraw-Hill Companies, Inc. Permission required for reproduction or display.



(a)



(b)



(c)

© The McGraw-Hill Companies, Inc. / Joe DeGrandis, photographer